

A Teaching Tool

For Your Students

# QR (Quick Response) Codes

*Download a QR Code reader on a IPad/Tablet or  
Smartphone*

# Why Create QR Codes for Students?

- Share info, URL's, YouTube videos, and more, without a single word.

- Let students discover and learn at their own pace.

- Use the QR Code over and over when the students need it.

# Creating QR Codes

1. Find a URL (website), YouTube video, or just use your own desired text that you would like to use.
2. Find a QR Code website “<http://www.qrstuff.com/>”
3. Choose your desired use for the QR Code - URL, plain text, telephone number, Google maps location, etc
4. Download and save the QR Code

[www.qrstuff.com](http://www.qrstuff.com/)



# Lets try one now!

- Scan the **Green** QR Code to go to  
<http://www.qrstuff.com/>



1. Choose your data type. Plain Text, URL, etc
2. Type something you would like to share with the class.
3. Choose a colour if you would like.
4. Download and save the QR Code for future use.

**SUBSCRIBERS  
GET MORE  
QR STUFF**



**SIGN UP NOW**

## QR CODE GENERATOR

### 1 DATA TYPE

- Website URL
- YouTube Video
- Google Maps Location
- Twitter
- Facebook
- LinkedIn
- FourSquare
- App Store Download
- iTunes Link
- Dropbox
- Plain Text
- Telephone Number
- Skype Call

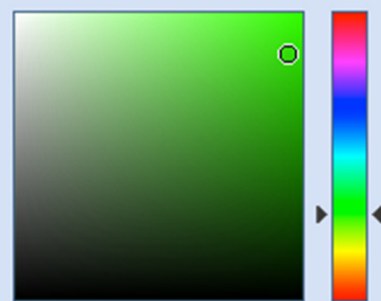
### 2 CONTENT

Text

- Embed text into code as-is
- Use our qrs.ly URL shortener

Subscribers get analytics and dynamic QR code editing when using our URL shortener.

### 3 FOREGROUND COLOUR



Foreground Colour (Hex):

Subscribers can also specify image size

### QR CODE PREVIEW



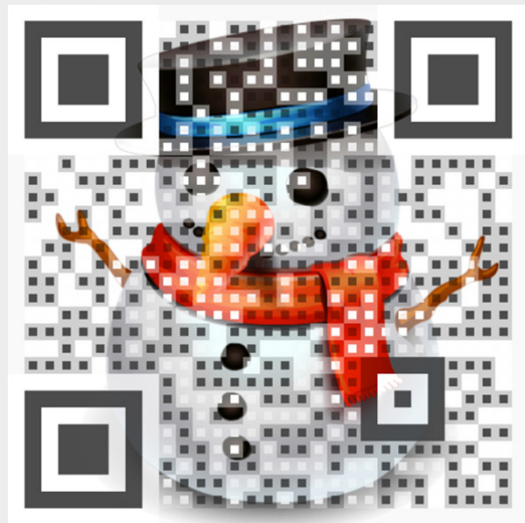
[↓ DOWNLOAD QR CODE](#)

## What else can you do with QR Codes?

Take projects, presentations or assignments and link them to a QR Code, providing your students with a way to access everything online without typing in a website URL.

# Make designer QR Codes

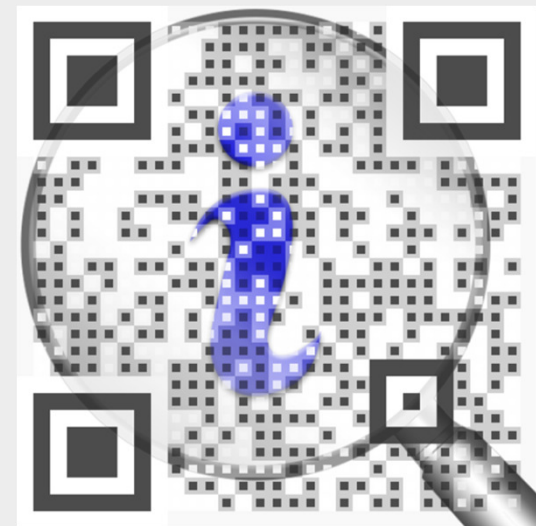
Make QR Codes unique by adding different designs.



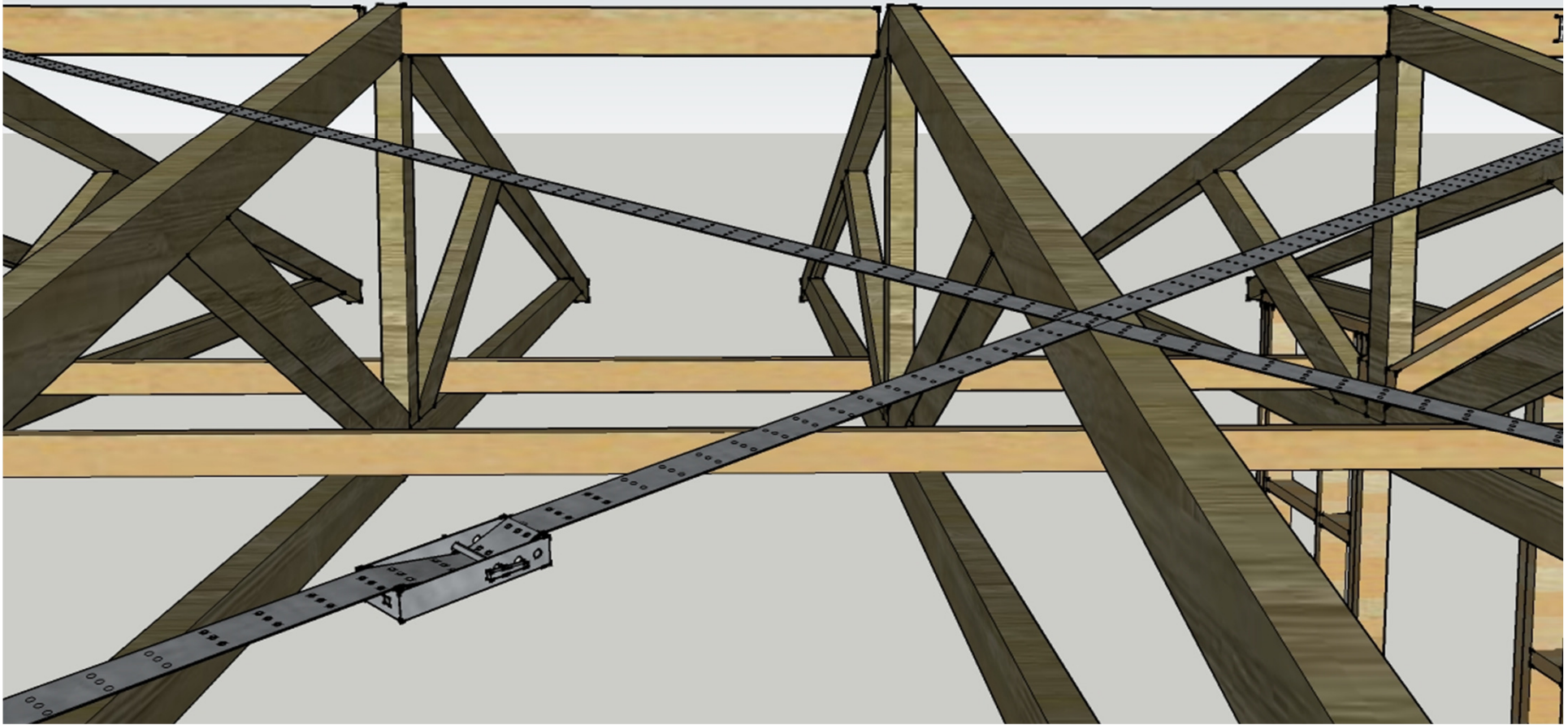
This QR Code  
contains useful  
information.



This Xmas QR Code  
contains this entire  
presentation



# Using a QR Code to Present a 3D Model



# Using Sketchup for 3D modeling



1. Create a Sketchup model
2. Create scenes in Sketchup
3. Export as a 3D animation
4. Upload the 3D animation to YouTube
5. Link the YouTube video URL to a QR Code
6. Print the QR Code for your students



# 9 Sided House Animation

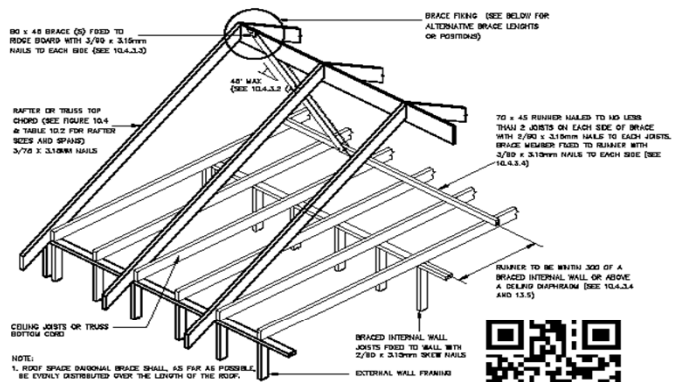
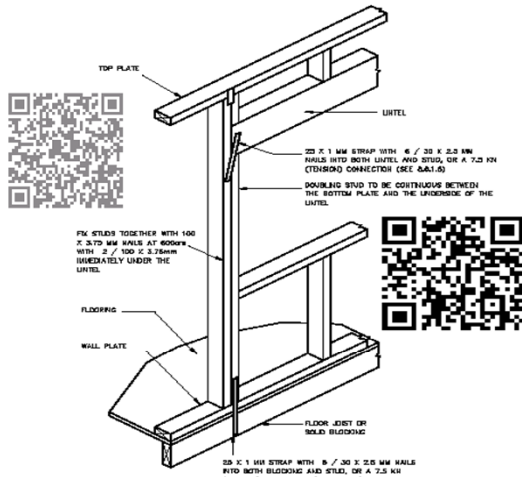


# NZS3604 Building Code

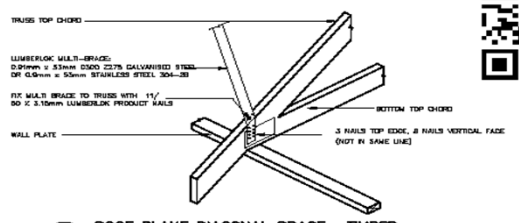
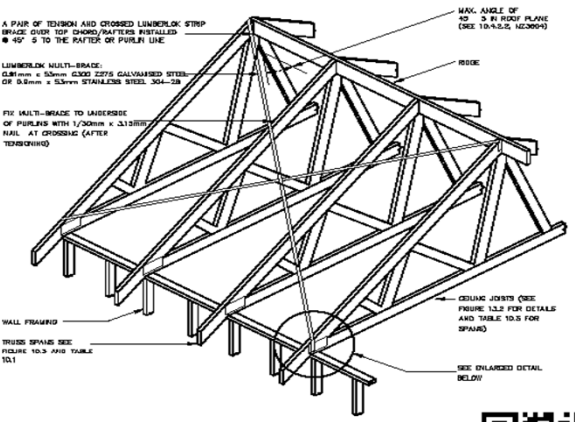
Adding QR Codes with useful links to specific NZS3604 Building code pages makes it easy for students to find the answers to questions, and information relating to assignments without having to navigate through the whole NZS3604



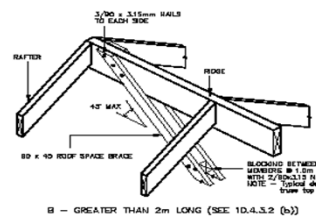
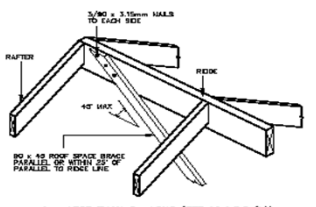
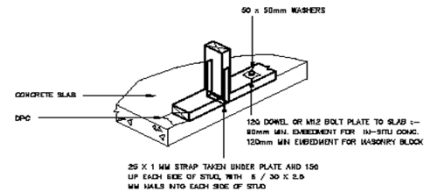
Section 10 of the NZS3604



NOTE:  
 1. ROOF SPACE DIAGONAL BRACE SHALL AS FAR AS POSSIBLE BE EVENLY DISTRIBUTED OVER THE LENGTH OF THE ROOF.  
 2. BRACES SHALL BE INSTALLED IN ALTERNATING OPPOSITE DIRECTIONS WHERE MORE THAN 1 BRACE IS REQUIRED (SEE 10.4.3.1)



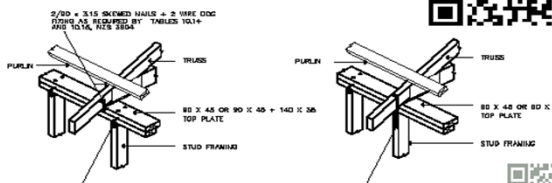
4 ROOF PLANE DIAGONAL BRACE - TIMBER



A - LESS THAN 2m LONG (SEE 10.4.3.2 (b))

B - GREATER THAN 2m LONG (SEE 10.4.3.2 (b))

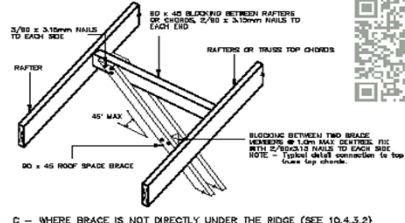
1 FIXING TO LINTELS TO PREVENT UPLIFT



2/80 x 2.15 SKINNED NAILS + 3 WIRE DCG FIXING AS REQUIRED BY TABLE 6.16, 10.2.3.3.4

2/80 x 2.15 SKINNED NAILS + 3 WIRE DCG FIXING AS REQUIRED BY TABLE 10.15, 10.2.3.3.4

2 TRUSS TO TOP PLATE FIXINGS



C - WHERE BRACE IS NOT DIRECTLY UNDER THE RIDGE (SEE 10.4.3.2)

ROOF SPACE DIAGONAL BRACE - ALTERNATIVE FIXINGS

3 ROOF SPACE DIAGONAL BRACE

Contractor to check all dimensions and levels on site with Architectural drawings before starting the works

JOB TITLE:				MAJOR DATE:
PROPOSED NEW TRANSPORTABLE HOUSE at 10 ROTHWELL AVE, ALBANY for UNITEC RELOCATABLE HOUSE				
DRAWING TITLE:				
BRACE CONSTRUCTION (ROOF & CEILING) & UPLIFT DETAILS				
DRAWN: PJS	CHECKED: H.A.	SCALE: NTS	A14	
REF: 13061	DATE: FEBRUARY 2015			
© COPYRIGHT				

VISION ARCHITECTURE LTD  
 ARCHITECTURAL DESIGNERS  
 10 ROTHWELL AVE, ALBANY, AUCKLAND  
 PH: 021-555-7171 FAX: 021-555-5558  
 P.O. BOX 62200, BALMORAL, AUCKLAND

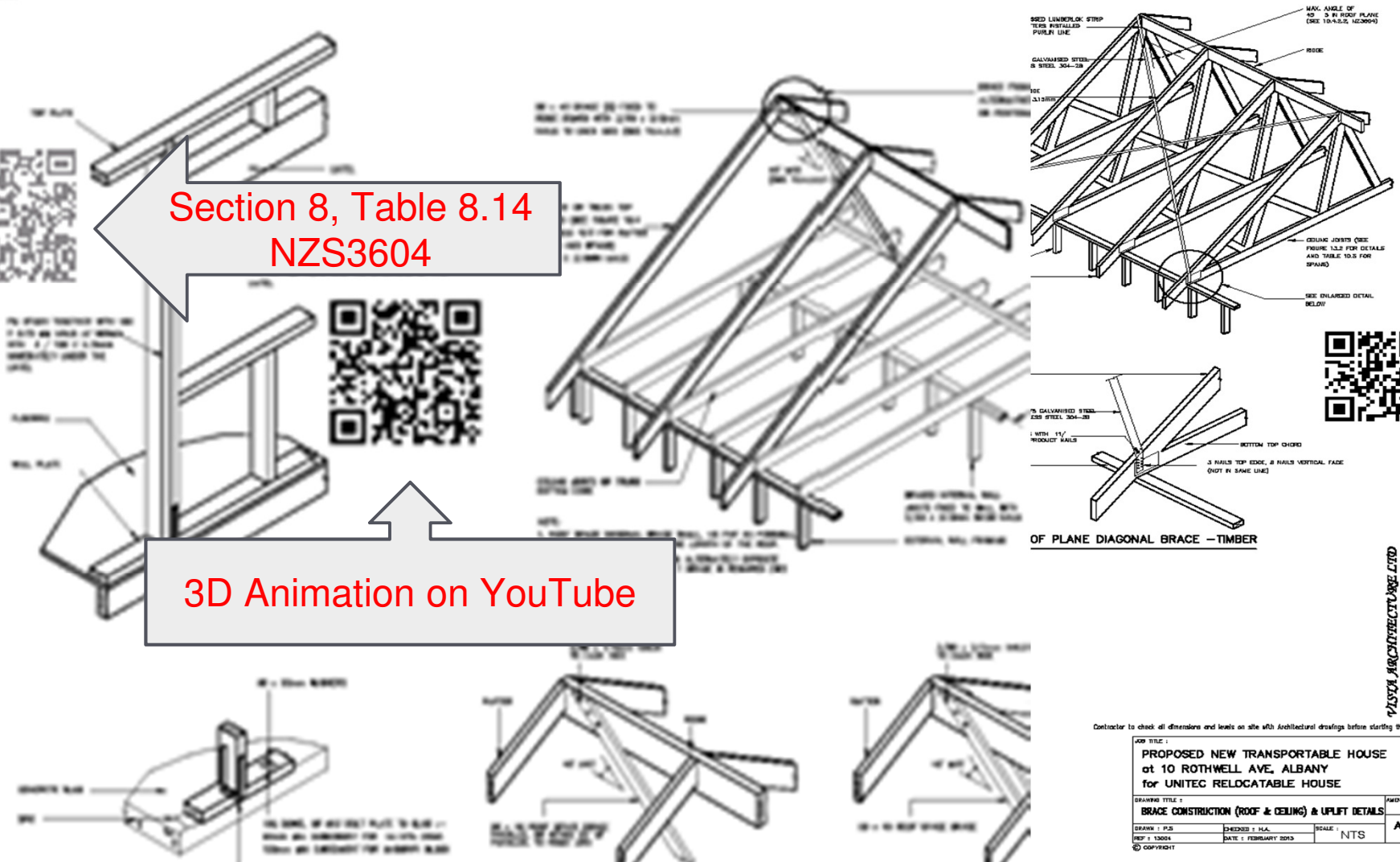




Section 8, Table 8.14  
NZS3604



3D Animation on YouTube



**VISION ARCHITECTURE LTD**  
ARCHITECTURAL DESIGNERS  
100 RIVERVIEW DRIVE, AUCKLAND  
P.H. : 626-5557, FAX : 626-5559  
P.O. 66200, BALWATER, AUCKLAND

Contractor to check all dimensions and levels on site with Architectural drawings before starting the works

JOB TITLE :			
PROPOSED NEW TRANSPORTABLE HOUSE at 10 ROTHWELL AVE, ALBANY for UNITEC RELOCATABLE HOUSE			
DRAWING TITLE :			MAJOR DATE :
BRACE CONSTRUCTION (ROOF & CEILING) & UPLIFT DETAILS			
DRAWN : PJS	DESIGNED : H.A.	SCALE :	A14
REF : 13001	DATE : FEBRUARY 2015	NTS	
© COPYRIGHT			

**Good Luck!**

